

### Photos of the month



Student taking part in a bridge building workshop

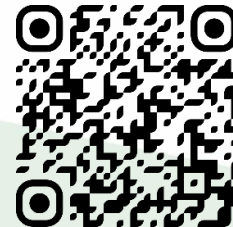


Ashington Cricket Club's Women Team, sponsored by Northumberland Line stations contractor Morgan Sindall Infrastructure

Welcome to the July 2023 edition of the Northumberland Line newsletter. The aim of this newsletter is to give an overview of upcoming site work, as well as letting you know about key project milestones.

This edition includes updates on the works at all the station sites along the Northumberland Line and the latest on Network Rail's programme of track renewal work in Ashington, Bedlington and West Sleekburn. It also includes details of our recent engagement with local schools, and information about a new Northern facility that will be built in Ashington for use by the conductors who will be working on the Northumberland Line once it is open.

If you wish to receive future editions of this newsletter straight into your email inbox, sign up at [nland.cc/signup](https://nland.cc/signup) or use the QR code below.



Alternatively, if you would prefer to have a paper copy delivered to your doorstep, please let us know by calling **0345 600 6400** or email [rail@northumberland.gov.uk](mailto:rail@northumberland.gov.uk).

# What is the Northumberland Line?



The Northumberland Line will bring passenger trains back into service between Ashington and Newcastle. It will provide new stations between Ashington and Newcastle Central Station, taking 35 minutes with no need to change trains. Alternatively, you can switch from the Northumberland Line at Northumberland Park to Tyne and Wear Metro for onward journeys to the Airport, Tynemouth and South Shields.

The freight trains that currently use the railway will still be able to do so, helping support the economic aspirations of both Lynemouth Power Station and the Port of Blyth.



# Recent project highlights

## Great community work continues

There's been more great work in the community by our team during the past couple of months. Here are just a few highlights of what we have been up to.

- Science, Technology, Engineering and Mathematics (STEM) workshops delivered to Castle School, Ashington, who provide specialist provision for pupils with special educational needs.
- STEM bridge building workshops delivered to The Dales School, Ashington.
- Teacher Encounters visit facilitated for 40 trainee teachers in partnership with Newcastle University and North East Local Enterprise Partnership.
- Mentoring and construction careers workshops delivered at Duke's Secondary School in Ashington.
- Careers fair attended for Year 8 pupils at Seaton Sluice Middle School.
- Local litter pick at Blyth Beach.
- Northern depot team helped to repair the rail classroom at The Dales School



Students taking part in the bridge building workshop

## STEM Fest 2023

Stations contractor Morgan Sindall Infrastructure recently joined over 50 North East businesses at this year's STEM Fest. Coordinated by the North East STEM Hub, the event took place at the VERTU Motors Arena in Newcastle between 4 and 6 July. Held annually, the festival aims to encourage and inspire young people from North East schools to take up STEM subjects.

Across the three days, over 3000 young people aged between 10 and 13 years old from across the region attended the festival. A total of 322 people from 37 different schools had a go at the LEGO engineering bridge challenge.



Morgan Sindall Infrastructure at STEM Fest

*As many people look forward to winding down for their summer holidays, the teams are planning to ramp up activity on site with track upgrade works at Ashington and Bedlington. These works will ensure the line is ready for the arrival of the passenger service. I'm also pleased to announce that construction work for the new stations at Seaton Delaval and Blyth Bebside will be starting soon.*

**Neil Blagburn, Northumberland Line Programme Director**



# Progress update and look ahead

## Supporting local cricket clubs

Stations contractor Morgan Sindall Infrastructure is supporting both the Ashington Cricket Club's Women's Team and the Bedlington Cricket Club Under 9s Team this season. Supporting health and wellbeing initiatives in our local communities is incredibly important and can improve accessibility to sport. The Under 9s team recently competed in a cricket festival wearing their new kit, featuring the Morgan Sindall Infrastructure logo.



Bedlington Cricket Club Under 9s Team

*This season is an exciting one for our Women's Team. Since taking up post, I have implemented a number of changes to raise the profile of the Women's Team and to attract more women and girls to play cricket at our club. Securing sponsorship from Morgan Sindall has been a massive boost to the club, but more importantly to the players themselves. It is the first time that they have had their own sponsor and, thanks to the support from Morgan Sindall, we have supplied new playing shirts and essential cricket equipment to their team. As a club, we are delighted to be working in partnership with Morgan Sindall and hope that, as a result, our Women's Team has a successful and enjoyable season.*

**Steve Storey, Chairman, Ashington Cricket Club**

## New depot for Northern's conductors to be built in Ashington

A facility for Northern staff working on the new Northumberland Line is set to be built on the site of a former care home in Ashington. The planning application for the building, which will have mess room facilities, an office, and a signing in point for staff, has been given the go-ahead by Northumberland County Council.

Construction is already well underway on Ashington Station and platform, and Northern's building will be located just off the southern end of the station platform, in its own secure compound with access to the station car park.

Northern is also set to recruit a team of conductors for the new service later this year.

*Bringing new rail services to the northeast as part of the Northumberland Line is really exciting and we're honoured to be able to provide those services for all the communities based along the route. As well as improving connectivity within and beyond the region, our presence in Ashington will also bring more jobs and economic growth to the area.*

**Kerry Peters, Northern Regional Director**

*This is yet another boost for Ashington and the Northumberland Line as progress continues at pace. Building and opening this line was always going to bring more jobs and investment to the area and we're looking forward to work starting on this part of the scheme.*

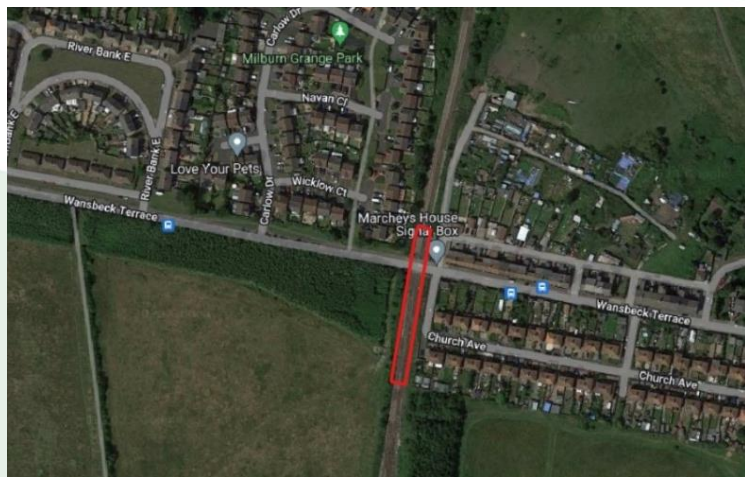
**Councillor Wojciech Ploszaj, Northumberland County Council cabinet member for supporting business and opportunities**

# Progress update and look ahead

## Track renewal works at West Sleekburn

Work to replace approximately 100m of track at Marchey's House Level Crossing, West Sleekburn, is scheduled to take place from **10pm on Tuesday 1 August until 5.30am on Friday 18 August**. The team will be on site 24 hours a day.

The works will require the temporary closure of Marchey's House Level Crossing on Wansbeck Terrace, to both vehicles and pedestrians, from **10pm on Thursday 10 August to 10pm on Tuesday 15 August**. A diversion route will be clearly signposted and a shuttle bus will be provided for pedestrians during the closure.



Source: Imagery @2023 Airbus, CNES/Airbus, Getmapping plc, Infoterra Ltd & Bluesky, Maxar Technologies, Map Data

Location of track renewal works

## Palmersville Dairy Underpass update

A new underpass was recently installed at Palmersville Dairy. The underpass replaces Palmersville Dairy Level Crossing, and will make crossing the line much safer for pedestrians and cyclists in North Tyneside.

It was a big job, with a full line closure over a weekend so that a trench could be dug and then three separate parts of the underpass laid into place using some

innovative machinery, before the parts were joined together and recovered, with the rail tracks then put back into place.

Watch the video below to see how it all came together, with interviews with Morgan Sindall Project Manager Tony Lloyd and Leader of Northumberland County Council Councillor Glen Sanderson.



## Virtual tours

Every month our stations contractor Morgan Sindall will be providing a 'behind the fence' look at each of their active sites. By using the QR codes below, you will be able to walk through the sites and see the progress being made, as well as learning how some of the work has been delivered and details of the machinery involved.

[Northumberland Park](#)  
[19.07.2023](#)



[Palmersville Dairy](#)  
[Underpass 07.19.2023](#)



[Ashington](#)  
[19.07.2023](#)



[Newsham](#)  
[07.19.2023](#)





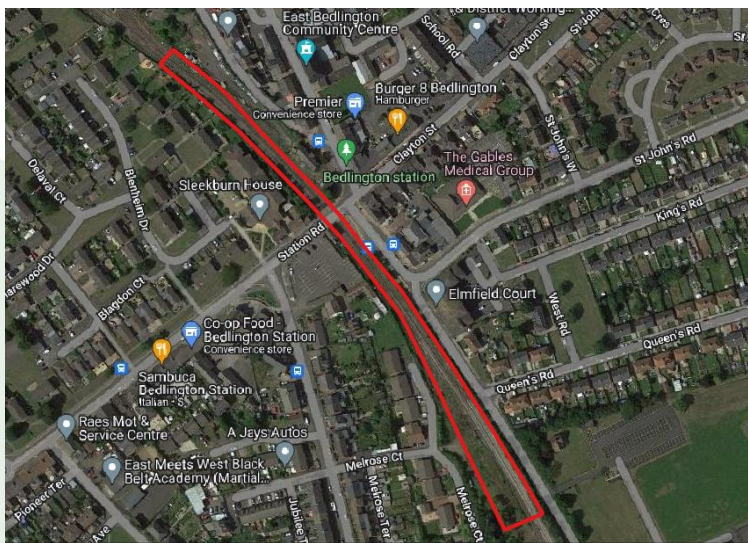
# Bedlington station construction and track renewal works

## Bedlington Station

Work to build the new station in Bedlington has recently started. This includes removal and replacement of parts of the existing platform, which will help ensure that the Northumberland Line can meet current railway standards for safety and accessibility.

## Track renewal works

Work is also due to start on major track upgrades, which will see approximately 400m of track, from Furnace Way northwards to the Bedlington Station site, replaced. The works will begin on **29 July 2023** and will continue until **16 September 2023**.



Imagery ©2023 Airbus, CNES/Airbus, Getmapping plc, Infoterra Ltd & Bluesky, Maxar Technologies, Map Data

Location of the track works in Bedlington

In order to ensure the works are completed to schedule, there will be teams on site **24 hours a day**. The teams will be operating as a moving work site, however, so will not be working continuously along the whole of the area indicated above throughout the works period.

During these works, engineering trains will sometimes also need to be used, and can be noisy as they need to sound their horns when moving near workers to help ensure safety. To limit noise during the works, where possible equipment will be turned off when not in use, and battery-operated machinery will be used.

The works will also require the temporary closure of two level crossings. Bedlington North Level Crossing on Barrington Road to vehicles and pedestrians from **10pm on Saturday 5 August to 10pm on Thursday 10 August**. Bedlington South Level Crossing on Station Road will also be closed to vehicles and pedestrians from **10pm on Thursday 10 August to 5.30am on Friday 18 August**, and again from **6pm on 22 August to 6pm on 23 August**. A shuttle bus will be provided for pedestrians during the closure of Bedlington South Level Crossing.

We regret that these works will result in noise and temporary disruption for line side neighbours and we are sorry for any inconvenience caused.

For any queries about this track work, please call the Network Rail National Helpline on 03457 11 41 41 (available 24/7).



Track upgrade works on the Northumberland Line

# Works by station location

## Palmersville Dairy Level Crossing

As reported last month and above, works at Palmersville Dairy have reached a significant milestone with the installation of the new underpass. Work here will now focus on finalising the installation and laying out the new public right of way through the underpass.

## Northumberland Park

Northumberland Park will be the first stop for trains travelling from Newcastle.

Works to enable the start of mining remediation, which will ensure the voids left by historic mining are completely filled in, have now commenced. The mining remediation works are then expected to take between three and six months to complete.

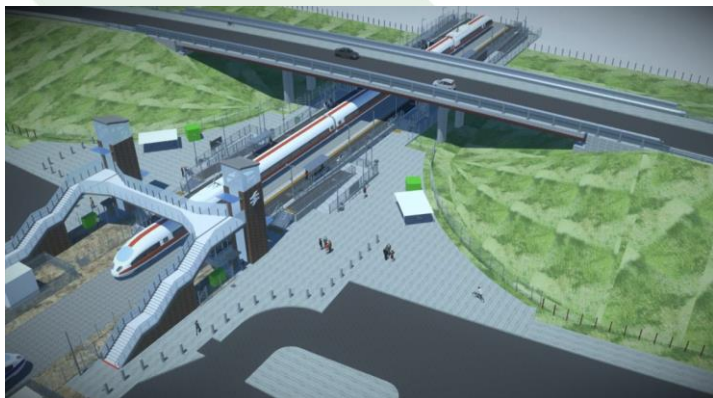
## Seaton Delaval

Seaton Delaval will be the second stop for trains travelling from Newcastle. Station construction is due to start soon, and more details will be shared in future newsletters.

## Newsham

Newsham will be the third stop for trains travelling from Newcastle and construction of the station and platform are underway.

Work has also now started on the construction of the bridge and the new roundabout off the A1061 South Newsham Road.



Artist's impression of the new bridge at Newsham station

In order to construct the new highways and roundabout to the west of South Newsham Road, permanent access to the current Public Right of Way from the A1061 has been diverted and a new access route established. The current wooden finger signage will be moved to reflect the new footpath route.

## Blyth Bebside

Blyth Bebside will be the fourth stop for trains travelling from Newcastle.

Construction work will start on **Monday 31 July** and early works comprise the setting up of the site compound and site access track from Front Street, adjacent to Errington Street. More details will be shared in future newsletters.

## Bedlington

Bedlington will be the fifth stop for trains travelling from Newcastle. As reported above, station construction works are underway and up to 400m of track between the station and Furnace Way sidings will be replaced during August and September.

At West Sleekburn, to the north of Bedlington, up to 100m of track will be replaced through Marchey's House Level Crossing in August.

## Ashington

Ashington will be the final stop for trains travelling from Newcastle.

Works on the new car park area at Ashington have moved into a new phase and Station Yard car park is now closed. A replacement car park has been established close by.

Works to upgrade the track at Ashington have recently been completed and we would like to thank everyone for their patience during the works.

As reported previously, following public consultation Hospital Level Crossing is now permanently closed and there will be no replacement crossing provided in this location.



## Upcoming road closures

We understand how disruptive any road closures (either partial or full) can be for journeys. Unfortunately, they are needed on this project, to allow the team to complete all the necessary works safely.

Where possible, we share information about road closures in advance to allow people to plan their journey. These will be shared via Northumberland County Council's social media channels, primarily on Twitter **@N\_landCouncil**.

The following is a list of the road closures currently planned. Please note, these may be subject to change.

### **A186 (Rotary Road) southbound closures**

The southbound lane of the A186 (Rotary Road) and the adjacent footway will be temporarily closed from **Saturday 22 July 2023**. The closure will remain in place until **March 2024**.

### **Kenilworth Road closures**

Kenilworth Road in Ashington will be closed to vehicles at its junction with Ashbourne Crescent from **Monday 7 August until Friday 25 August**.

Pedestrians' access will be given to the west side footway on Kenilworth Road from **Monday 7 August until Sunday 13 August**. From **Monday 14 August to Sunday 20 August**, both the footways along Kenilworth Road will be closed to allow safe working. Pedestrians will be diverted using Ashbourne Terrace, Park Road and Station Road.

### **Bedlington North Level Crossing closure**

Pedestrian and vehicular access across Bedlington North Level Crossing will be restricted from **10pm on Saturday 5 August to 10pm on Thursday 10 August**. A diversion route will be clearly signposted.

### **Bedlington North footway closure**

The pedestrian crossing at Bedlington North will be restricted from **10pm Saturday 5 August to 5.30am Friday 18 August**. A diversion route will be clearly signposted.

### **Bedlington South Level Crossing closure**

Pedestrian and vehicular access across Bedlington South Level Crossing will be restricted on the following dates and times listed below.

- From **10pm on Thursday 10 August to 5.30am on Friday 18 August**.
- From **6pm on Tuesday 22 August to 6pm on Wednesday 23 August**.

A shuttle bus will be provided for pedestrians.

### **Marchey's House Level Crossing closure**

Pedestrian and vehicular access across the Marchey's House Level Crossing at West Sleekburn will be restricted from **10pm on Saturday 5 August to 5.30am on Friday 15 August**.

A shuttle bus will be provided for pedestrians.



# Connect with us



Connect with us and keep updated online by signing up at [nland.cc/signup](http://nland.cc/signup). Alternatively, scan the QR code below to sign-up to receive the digital newsletter **monthly**.

Up to date information about the project will be included on the scheme website <http://www.northumberlandline.uk/>.

If you would like to get in touch with us to ask any questions, please use the details below and we will try to ensure the appropriate person responds to you as soon as possible.



# Keeping You Connected

Northumberland Line... Connecting Communities, Businesses and People



Funded by  
UK Government

Supported by:



NORTHERN

NORTH  
OF TYNE  
COMBINED  
AUTHORITY

