

Have your say

We are now consulting local people on a new pattern of divisions for Northumberland County Council. We have an open mind about our final recommendations, and we will consider every piece of evidence we receive from local groups and people, regardless of whom it is from or whether it relates to the whole council area or just a part of it.

If you agree with our recommendations, please let us know. If you don't think our recommendations are right for Northumberland we want to hear alternative proposals for a different pattern of divisions.

We aim to propose a pattern of divisions for Northumberland County Council which delivers:

- **Electoral equality:** each councillor represents a similar number of electors.
- **Community identity:** reflects the identity and interests of local communities.
- **Effective and convenient local government:** helping your council discharge its responsibilities effectively.

A good pattern of divisions should:

- Provide good electoral equality, with each councillor representing, as closely as possible, the same number of electors.
- Reflect community interests and identities and include evidence of community links.
- Be based on strong, easily identifiable boundaries.
- Help the council deliver effective and convenient local government.

Electoral equality

- Does your proposal mean that councillors would represent roughly the same number of electors as elsewhere in the council area?

Community identity

- **Transport links:** are there good links across your proposed division? Is there any form of public transport?
- **Community groups:** is there a parish council, residents association or another group that represents the area?
- **Facilities:** does your pattern of divisions reflect where local people go for shops, medical services, leisure facilities etc?

Write to:
Review Officer (Northumberland)
LGBCE
PO Box 133
Blyth
NE24 9FE

- **Interests:** what issues bind the community together or separate it from other parts of your area?
- **Identifiable boundaries:** are there natural or constructed features which make strong boundaries for your proposals?

Effective local government

- Are any of the proposed divisions too large or small to be represented effectively?
- Are the proposed names of the divisions appropriate?

Useful tips

- Our website has a special consultation area where you can explore the maps. You can find it at www.lgbce.org.uk
- We publish all submissions we receive on our website. Go to: www.lgbce.org.uk

Our website:
www.lgbce.org.uk
Email:
reviews@lgbce.org.uk
Twitter:
[@LGBCE](https://twitter.com/LGBCE)

Northumberland County Council

Draft Recommendations on the new electoral arrangements



Who we are

- The Local Government Boundary Commission for England is an independent body set up by Parliament.
- We are not part of government or any political party.
- We are accountable to Parliament through a committee of MPs chaired by the Speaker of the House of Commons.
- Our main role is to carry out electoral reviews of local authorities throughout England.

Electoral review

An electoral review examines and proposes new electoral arrangements for a local authority, including:

- The total number of councillors representing the council's electors ('council size').
- The names, number and boundaries of wards or electoral divisions.
- The number of councillors for each ward or division.

Why Northumberland?

- Northumberland County Council currently has high levels of electoral inequality: some councillors represent many more - or many fewer - electors than others.
- We are seeking to improve levels of electoral equality for local electors.

Our proposals

- We propose that the council should have **69 councillors** in future, representing 67 single-councillor divisions and one two-councillor division across the council area.

You have until 10 July 2023 to have your say on the recommendations

Summary of our recommendations

Our draft recommendations propose that Northumberland County Council should have 69 councillors, two more than the existing arrangements. This increase allows the Commission to provide a division pattern for Northumberland that has a good balance of divisions in the rural and urban areas.

Those councillors should represent 67 single-councillor divisions and one two-councillor division across the council area.

Before drawing up the draft recommendations, the Commission carried out a public consultation inviting proposals for a new pattern of divisions for Northumberland.

We have considered all of the submissions we received during that phase of consultation and produce this set of draft recommendations. The boundaries of most divisions will change, thirteen will stay the same.

An outline of the proposals is shown in the map to the right. A detailed report on the recommendations and interactive mapping is available on our website at: www.lgbce.org.uk.

We welcome comments on our draft recommendations, whether you support the proposals or wish to put forward alternative arrangements.

Have your say at www.lgbce.org.uk/all-reviews/northumberland

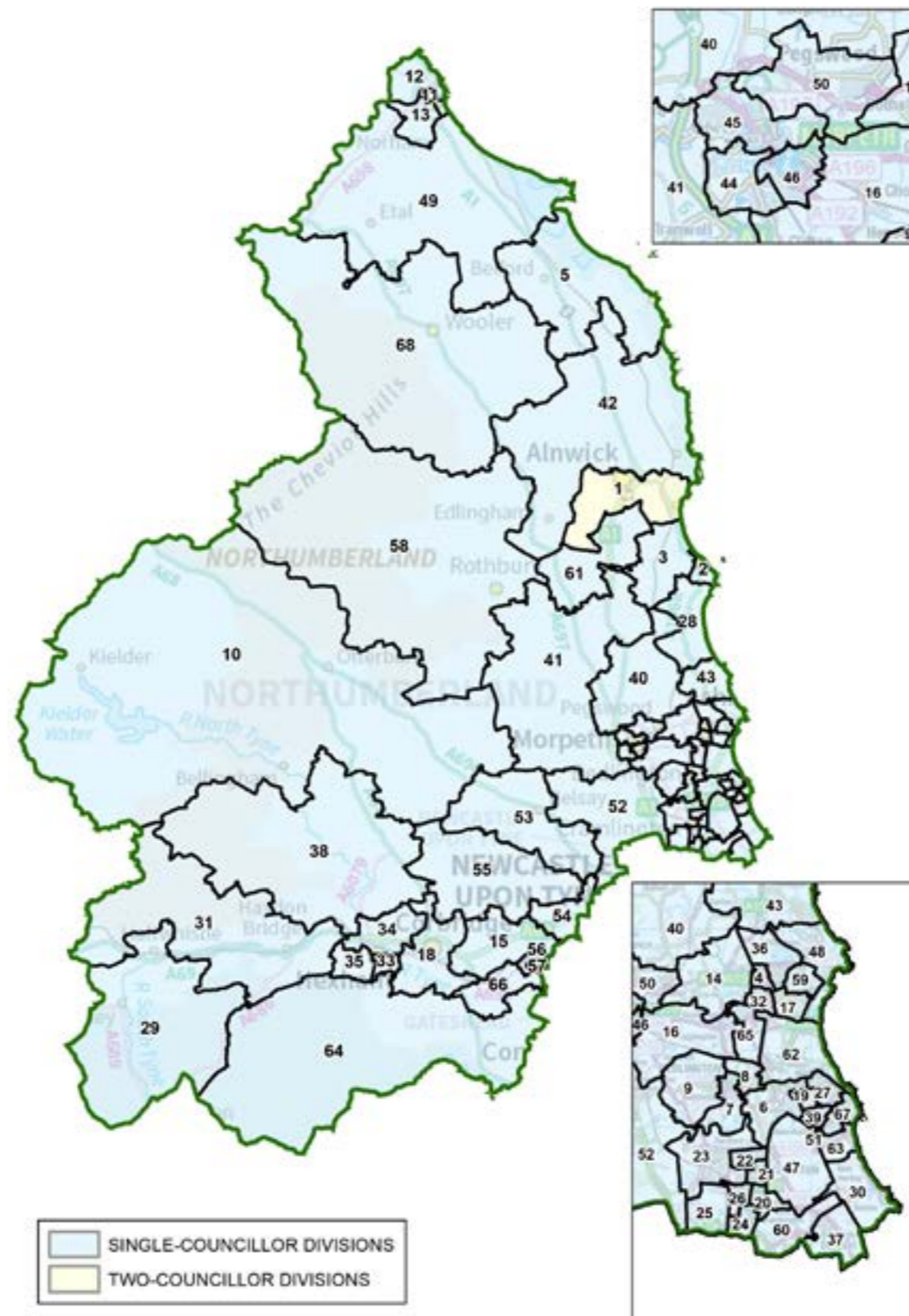
- view the map of our recommendations down to street level.
- zoom into the areas that interest you most.
- find more guidance on how to have your say.
- read the full report of our recommendations.

Stage of Review	Description
22 November 2022 - 6 February 2023	Public consultation on division arrangements
2 May 2023 - 10 July 2023	Public consultation on draft recommendations
3 October 2023	Publication of final recommendations
May 2025	Subject to parliamentary approval - implementation of new arrangements at local elections

Overview of draft recommendations for Northumberland County Council

View this map online:
www.lgbce.org.uk/all-reviews/northumberland

Follow the review on Twitter: [@LGBCE](https://twitter.com/LGBCE)



	Ward Name
1.	Alnwick
2.	Amble
3.	Amble West with Warkworth
4.	Ashington Central
5.	Bamburgh
6.	Bebside
7.	Bedlington Central
8.	Bedlington East
9.	Bedlington West
10.	Bellingham
11.	Berwick East
12.	Berwick North
13.	Berwick West with Ord
14.	Bothal
15.	Bywell
16.	Choppington
17.	College with North Seaton
18.	Corbridge
19.	Cowpen
20.	Cramlington East
21.	Cramlington Eastfield
22.	Cramlington North
23.	Cramlington North West
24.	Cramlington South East
25.	Cramlington South West
26.	Cramlington Village
27.	Croft
28.	Druridge Bay
29.	Haltwhistle
30.	Hartley
31.	Haydon
32.	Haydon & Hadrian
33.	Hexham East
34.	Hexham North

35.	Hexham West
36.	Hirst
37.	Holywell
38.	Humshaugh
39.	Isabella
40.	Longhirst
41.	Longhorsley
42.	Longhoughton
43.	Lynemouth
44.	Morpeth Kirkhill
45.	Morpeth North
46.	Morpeth Stobhill
47.	New Delaval & New Hartley
48.	Newbiggin-by-the-Sea
49.	Norham & Islandshires
50.	Pegswood
51.	Plessey
52.	Ponteland East & Stannington
53.	Ponteland North
54.	Ponteland South with Heddon
55.	Ponteland West
56.	Prudhoe North
57.	Prudhoe South
58.	Rothbury
59.	Seaton with Spital
60.	Seghill with Seaton Delaval
61.	Shilbottle
62.	Sleekburn
63.	South Blyth
64.	South Tynedale
65.	Stakeford
66.	Stocksfield
67.	Wensleydale
68.	Wooler