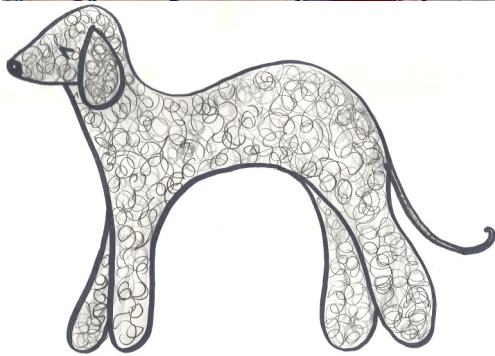




# Newbiggin by the Sea Town Plan

## The next 10 years



Newbiggin by the Sea Town Plan  
2010 to 2015



Sustainability through Collaboration



# A new Town Plan to support regeneration for 10 years

Newbiggin by the Sea Town Council established only in 2009 has overseen progress working with various partners to implement the priorities of the first Town Plan from 2010.

Following feedback through local councillors and consultation and discussion with key stakeholders, also taking account of the survey of residents and businesses through 2015-16, it has been agreed to retain the Mission Statement and the initial aims of the Town Plan:

## Mission statement

---

Sustainability through Collaboration

---

## Aims

1. To raise the aspirations and prosperity of all our constituents, especially the young.
2. To improve our environment, providing a clean, tidy and aesthetically pleasing place to live, work and visit.
3. To encourage and support an increase in tourism.
4. To increase the skills base within the town, supporting adults into work.
5. To support an aging population.

Building on the rich heritage of mining and fishing in the town, the tremendous facility of an accessible south-facing bay and promenade, key historical buildings including St Bartholomew's Church and Woodhorn Church, the oldest working lifeboat station in the United Kingdom with soon to be restored Rocket House, and the enterprise of local organisations is essential to continue the progress the town has made in the last few years.

This Town Plan reflects the needs and wishes of the local community and will be used as a guide and framework for developments and priority-setting. It should be used by other groups and organisations within Newbiggin by the Sea when developing future policies and strategies, support applications to funding bodies and partnerships, to develop and deliver what the local community needs to sustain the regeneration of the town.

## Town Council Role

Being a first tier local council the statutory powers of the Town Council are limited and so are its resources but it will work with Northumberland County Council and other agencies to deliver a range of services and projects within the town.

Newbiggin by the Sea Town Council takes seriously its responsibility to represent our constituents and obtain the best outcome for them in any negotiations and service settlements. We aim to influence external agencies to undertake a range of work on our behalf for the benefit of the Town, thereby maximising our limited resources and will continue to:

- Provide a democratic and representational voice for the community.
- Support and contribute towards local regeneration and development.
- Seek to ensure quality and economic local council services.
- Liaise with other agencies to preserve and improve public services.

## Important Objectives to continue

### Raising aspirations

- Encourage all children to actively participate in arts, sports, literary or community activities, so that active partnerships engage and benefit our young people.
- Encourage and provide tuition-based opportunities for all 7 to 10 year old children in the town.

### Improving our environment

- Continue to increase woodland around the community.
- Continue to work with other agencies to promote responsible dog control to reduce the number of complaints.

### Increasing tourism

- Support a programme of sporting, arts and community events .

### Increasing skills

- Support the creation of apprenticeships and training opportunities within the town, where possible creating opportunities for Newbiggin by the Sea residents.

### Supporting the elderly

- Support community transport provision and local community groups.

## Significant support for ongoing schemes

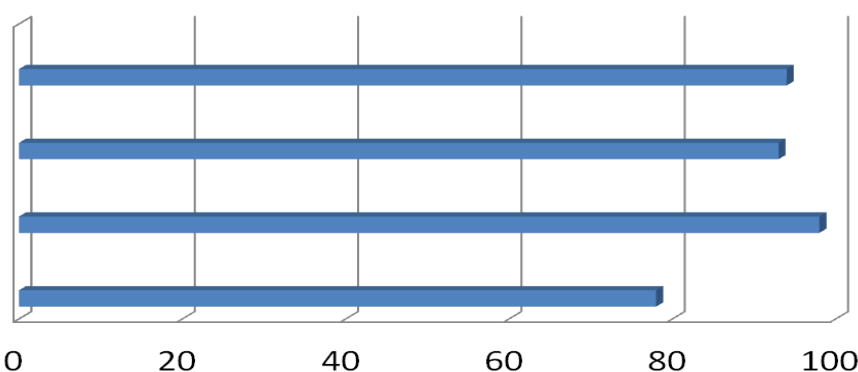
These areas have been well supported and developed over the past few years and form the bedrock of future budget provision for the Town Council. Financial contributions have been made to expand Young

Neighbourhood Services  
Enhanced Partnership 94%

Newbiggin Nipper  
Transport Scheme 93%

Environmental  
Improvement Schemes 98%

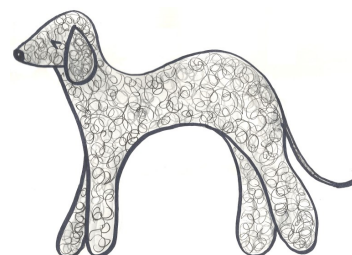
Young People's Activity and  
Development Schemes 78%



People's Activity and Development Schemes providing musical tuition and sports and activity programmes in association with various partners.

The innovative Newbiggin Nipper Transport Scheme operated by WATbus and supported by the County Council and Town Council is in its seventh year now and provides an essential transport link around the town particularly for the elderly.

An Enhanced Partnership with Neighbourhood Services has been in place for the summer seasons since 2014 and will continue in 2017 to undertake necessary cleansing and repair works in the local community no longer carried out by the County Council. This includes responsibility for bus shelters; public seats; floral bedding displays; litter bins; play areas previously operated by local services and funded by the Town Council since 2011.



Environmental Improvement Schemes have been carried out around the bay and town, the latest being completed at the Horseshoe Steps and the Pit Wheel where planting schemes will be completed in the Spring. Such schemes will continue as budget provision allows as they are well received by the community. Provision has been made to continue to improve the seasonal Christmas lighting displays and after a long demanding journey the community's first priority of improved public toilets will be achieved in 2017 as part of the town centre development.

The Challenge - Meeting the expectations of the community and aspirations of the Town Plan will be a challenge as the County Council adjusts its priorities in response to continuing budget pressures but the local priority of environmental cleanliness and attractiveness for visitors and local residents alike is clear and will be supported by the Town Council. Co-operative partnership working by all will be essential.



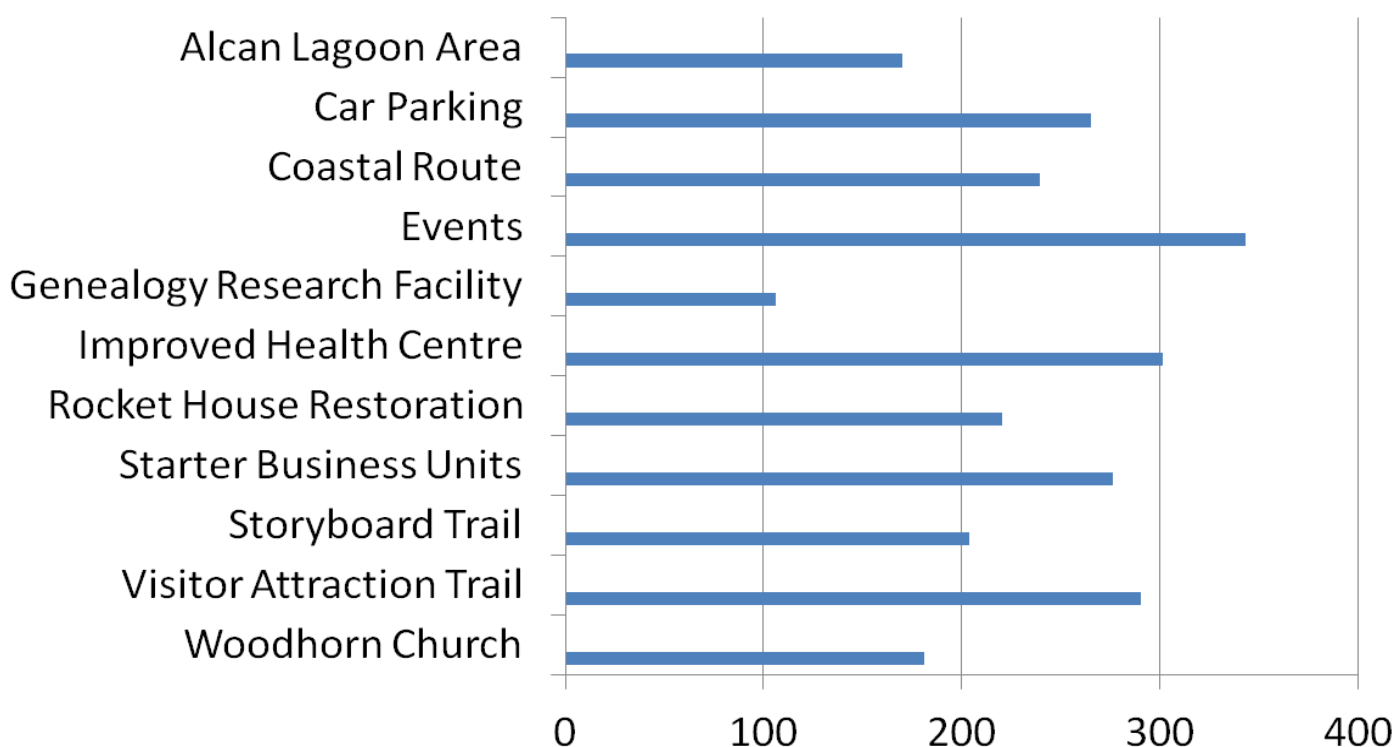
## Consultation responses

The consultation exercise set out a way forward building on the good work of the first Town Plan to progress regeneration of our community expanding the main aims and objectives and suggesting a more ambitious programme for projects to be delivered in partnership with other agencies.

There was significant public support for all suggested possible schemes with each one attracting a top priority rating. Overall scoring by respondents is set out in the table:

## Major Projects for the Plan Period

The Town Council has agreed the inclusion of all of the schemes within the ten year plan and added Woodhorn Mill as a joint investigation with Lynemouth Parish Council. Some projects are already well developed and may be achieved relatively quickly but



generally most will take several years to implement and are in the control of other agencies and require significant resources and funding.

Other options and comments from the community covered a range of highways and infrastructure matters within the purview of the County Council regarding street and promenade condition including dog issues; improved car parking provision; wheelchair access; speeding traffic; pavement parking issues: more tree planting will be borne in mind as discussions progress.

Improved housing choice and the development of further available sites are increasingly important to the regeneration of the town.

## Progressing our aspirations

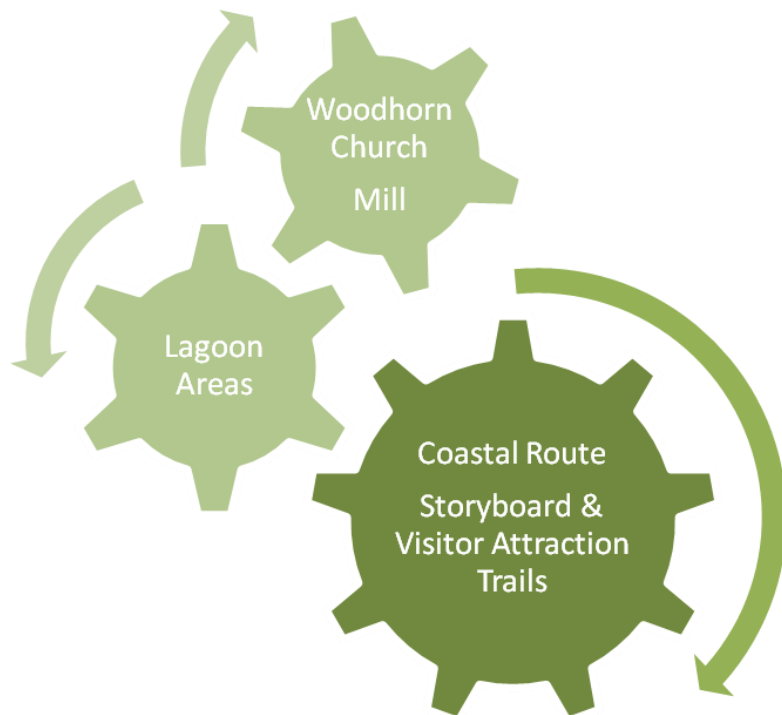
There is a lot of common ground and inter-connection between existing priorities and local services and future projects.

Newbiggin by the Sea is fortunate in having fine assets of the bay and promenade accessible all year round and the range of priority projects can all be linked to provide a comprehensive trail of visitor attractions.

A vast area of the parish has been used for ash lagoons and a working group

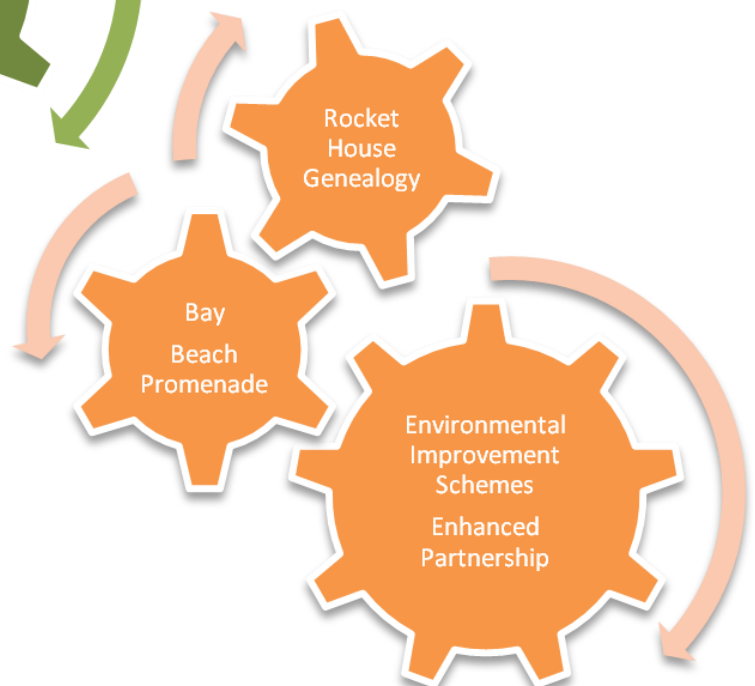
continues to investigate an accessible nature reserve when restoration is complete this year. The Town Council is continuing discussions with the Environment Agency, County Council and the new owners with the hope of linking in the Coastal Route and Trails leading to the Mill and Woodhorn Church where the Friends of the Church continue to explore sustainable uses and funding options.

The key to achieving these improvements as much for the benefit of local residents as the increasing number of visitors to the town is to continue to improve partnership working.



Newbiggin Heritage Partnership is making fine progress with the scheme to renovate the Rocket House which will open in 2017.

Maintaining the cleanliness and attraction of Newbiggin by the Sea is both a high priority and a challenge where the partnership with the County Council is crucial. While sand is a great natural asset nature continues to present problems that we will strive to address following the trial redistribution and clearance works, within the limited resources available, and maintain a high priority for access along the promenade.



We will be working to enhance these partnerships seeking to pool expertise and resources to provide improved outcomes.

A successful strategy over the first plan period was the production and distribution of an Events Leaflet and this will continue to help publicise the increasing number of local events being arranged by local organizations. This option attracted the largest overall support and organizations are ready to build on the successes of last year. The Town Council will continue to support the Leaflet and events where possible and has made budget provision to continue to provide and improve the Christmas lighting display. Much work is still required to join together the various elements and priorities to improve again the visitor attraction offer that will support regeneration.



There are some major areas that will require approaches and joint working with key partners the County Council; the Health Authority; Arch; Active Northumberland. Taking account of the continuing pressure on financial resources the Town Council will seek to make progress with priorities for more car parking and maintaining local neighbourhood service standards; improve health care facilities in the town; providing starter business units.

The aspirations of this plan are very high while the aims are necessary to provide a sustainable local community. The priority schemes at the outset remain at a high level while commitment and plans are developed, no doubt at differing rates of progress, with those partners, site owners and stakeholders.



Preserving and improving good quality local services; local access to health services; sports and leisure provision and access to healthy activities; town centre enhancement; improved housing choice remain as important objectives as well as new schemes to continue the regeneration of Newbiggin by the Sea. These areas will equally need attention during the plan period.

## The Town Plan of Newbiggin by the Sea

Published by Newbiggin by the Sea Town Council January 2017

Contact Us by E-mail: [TownClerk@newbiggintowncouncil.gov.uk](mailto:TownClerk@newbiggintowncouncil.gov.uk)

Telephone: 01670 851833

The Bungalow, Woodhorn Road, Newbiggin by the Sea, NE64 6HG

